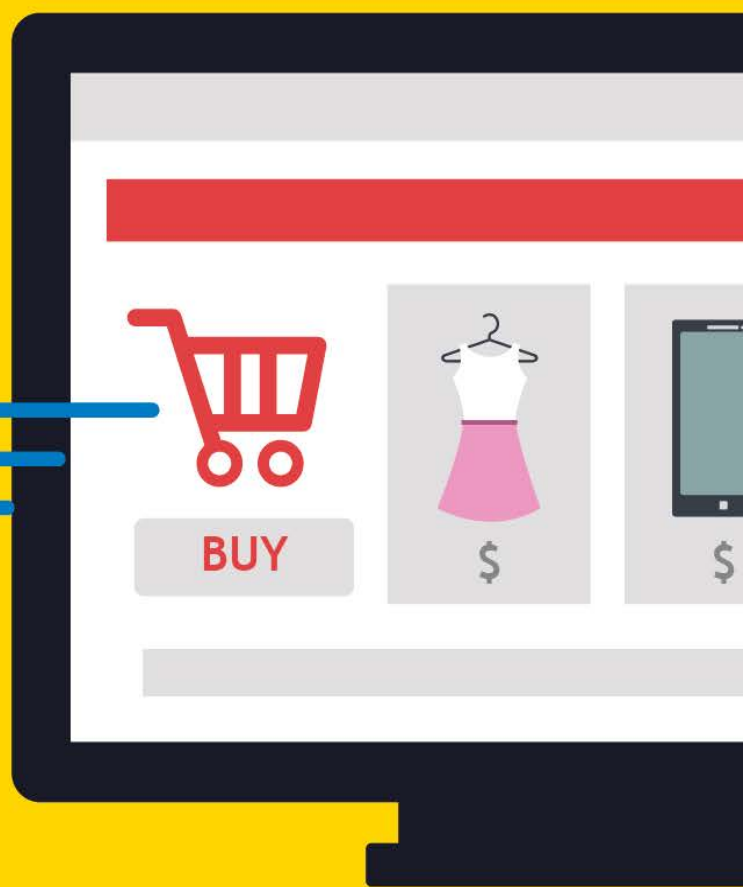




Fast delivery for  
International purchases



# The International Parcel Direct Entry Service - EDEI,

commercially known as **Correios Packet**, was born with the purpose of meeting a market demand allowing Correios to receive postal cargo with presentation of Air Waybill (AWB).



## Performs:

- Receiving
- Customs clearance
- Processing and national distribution
- Parcels up to 30kg
- For people or companies

# Informations

Correios Packet is a new import solution to Brazilian buyers. It is a public-private partnership between Correios and Private Logistics Operators

Among the existing freight options to Brazil, Correios Packet is born with a complete systemic integration between origin, Correios and RFB.



Import of parcels to all Brazilian territory, with full tracking, from the origin until final delivery;



Information Exchange via *Application Programming Interface - API* and *Electronic Data Interchange - EDI*;



Involves receiving parcels in Brazil, customs clearance and last mile delivery;



One more qualified shipping option in the shopping experience by Brazilian e-consumers.

---

# Advantages

Qualified import service for parcel delivery throughout Brazil. It is possible to track every step of the order throughout the entire journey, from origin to final delivery.



Speed and integrity in the information exchange via systems, allowing a faster connection between origin, Correios and RFB;

Consequently, giving more agility in the customs clearance and last mile delivery processes, reducing the total delivery time in Brazil;



Improved shopping experience by Brazilian e-consumers;

# Modalities



## *Packet Standard*

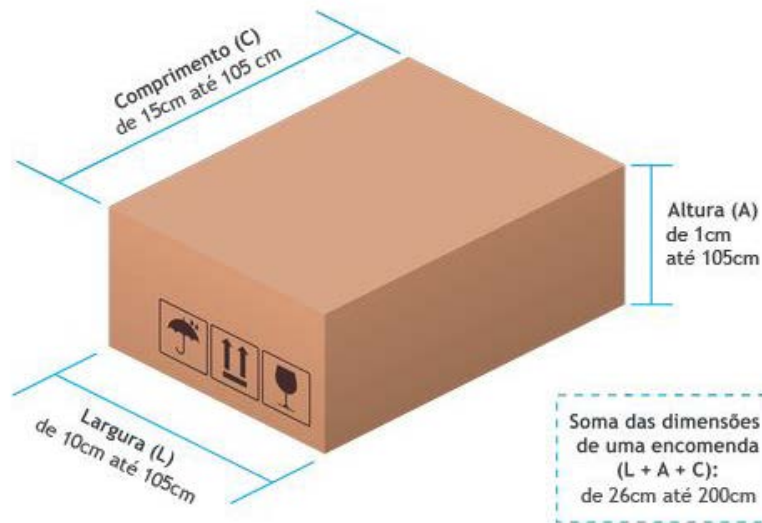
- Non-priority delivery;
- Deadlines up to 10 days to main capitals, after customs clearance.
- The Packet Standard Service tracking code consists of the initial letter "NX" + 9 numbers + 2 letters (BR).
- Example:  
NX123456789BR



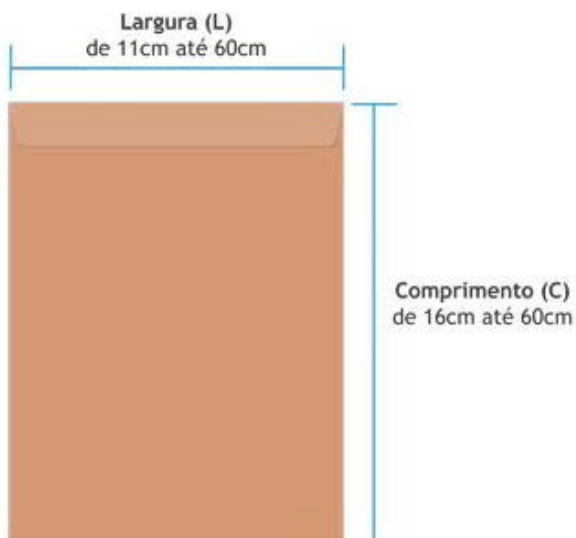
## *Packet Express*

- Priority delivery;
- Deadlines up to 4 days to main capitals, after customs clearance.
- The Packet Express Service tracking code consists of the initial letter "IX" + 9 numbers + 2 letters (BR).
- Example:  
IX123456789BR

# Weight and Dimensions

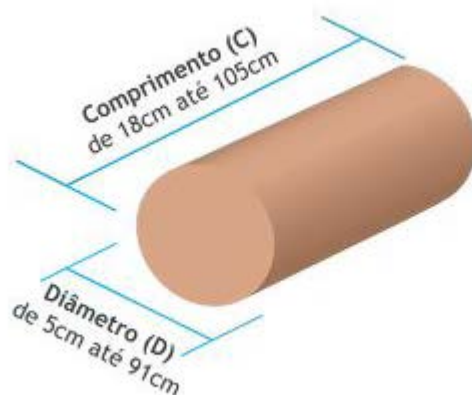


<i>Package and box</i>	<i>Minimum</i>	<i>Maximum</i>
<i>Length (C)</i>	<i>16cm</i>	<i>105cm</i>
<i>Width (L)</i>	<i>10cm</i>	<i>105cm</i>
<i>Height (A)</i>	<i>1cm</i>	<i>105cm</i>
<i>Sum of dimensions: C+L+A</i>	<i>26cm</i>	<i>200cm</i>



<i>Envelope</i>	<i>Minimum</i>	<i>Maximum</i>
<i>Length (C)</i>	<i>16cm</i>	<i>60cm</i>
<i>Width (L)</i>	<i>11cm</i>	<i>60cm</i>

# Weight and Dimensions

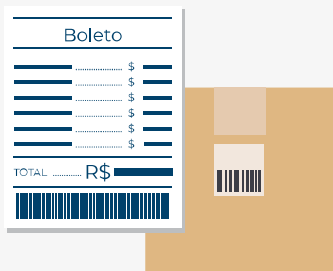


Soma das dimensões  
de uma encomenda  
(2xD) + C:  
de 28cm até 200cm

<i>Roll</i>	<i>Minimum</i>	<i>Maximum</i>
<i>Length (C)</i>	<i>18cm</i>	<i>105cm</i>
<i>Diameter (L)</i>	<i>5cm</i>	<i>91cm</i>
<i>Sum of Dimensions: C+L</i>	<i>28cm</i>	<i>200cm</i>



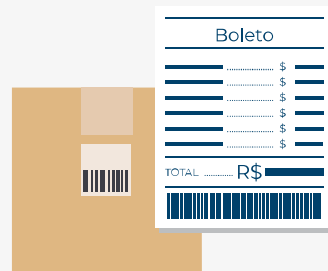
<i>Service</i>	<i>Maximum Weight</i>
<i>Packet Standard</i>	<i>up to 30kg</i>
<i>Packet Express</i>	<i>up to 30kg</i>



## Previous Tax

(DDP - Delivery Duty Paid)

It is possible to pay all taxes at the origin and accelerate even more the processing of the package within the distribution flow.



## Later Tax

(DDU - Delivery Duty Unpaid)

It is possible to pay all taxes once the order has arrived in Brazil.

For this it is necessary to enter the Importer Portal (Portal do Importador)  
(<https://apps.correios.com.br/portalmportador/>)



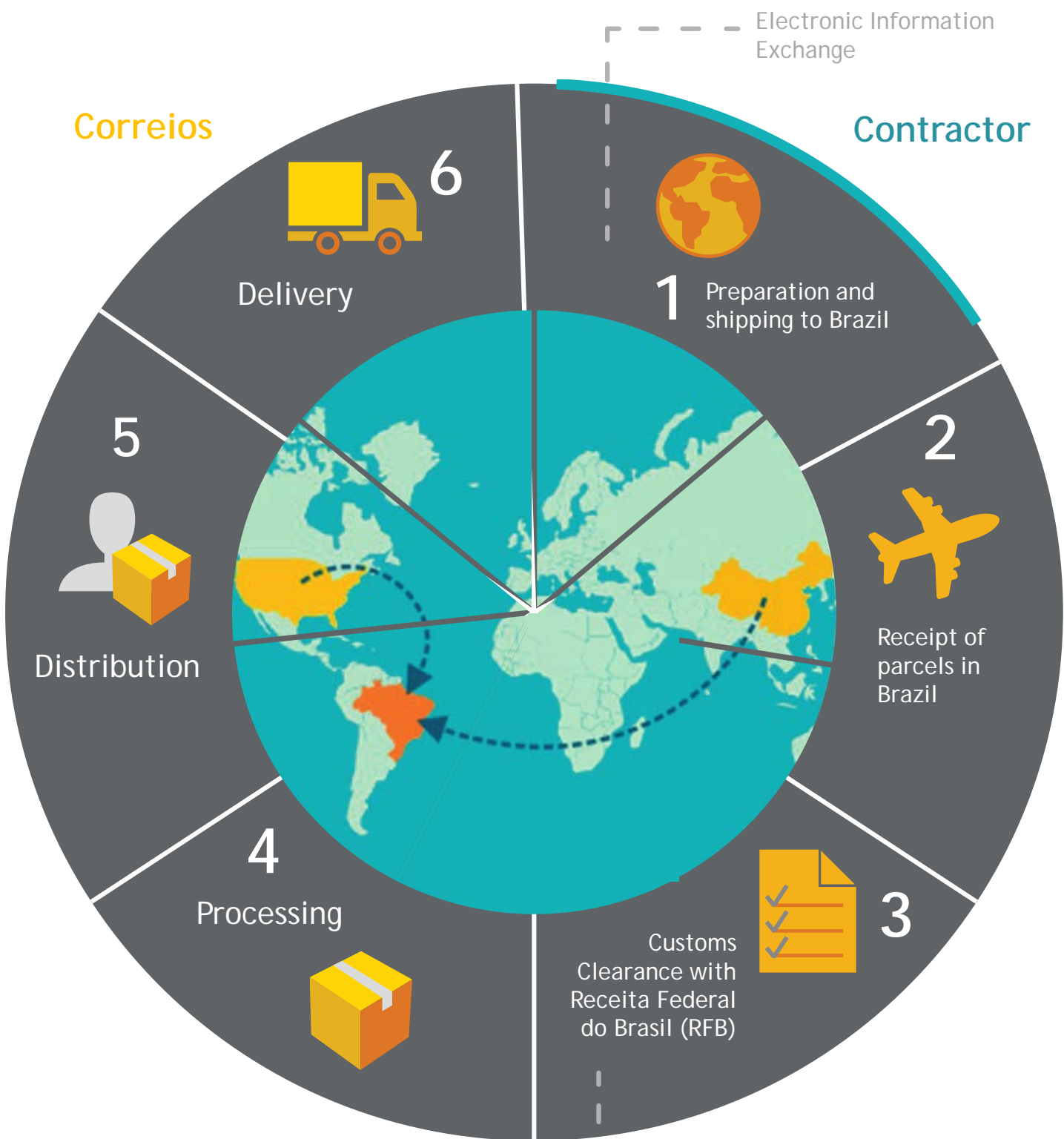
# Taxes



# Benefits

- Logistics Process Optimization;
- Electronic Exchange of packages informations;
- Greater visibility for all involved: the buyer recipient, the consenting agencies, the international logistics operators, Correios and the international seller.
- 100% automated, transparent and traceable process.

# Product Flow



Electronic Information Exchange



## Fast Delivery for International Purchases

International sellers now have direct access to national delivery services and Brazilians gain from the offering of faster and more qualified delivery solutions for their international purchases.



Talk to our business  
consultants.